

Polyethylene Fitting Catalogue



Pars Ethylene Kish Office

Office Address ■ No18, Mina Blvd., Africa St. Tehran/Iran

Factory address: ■

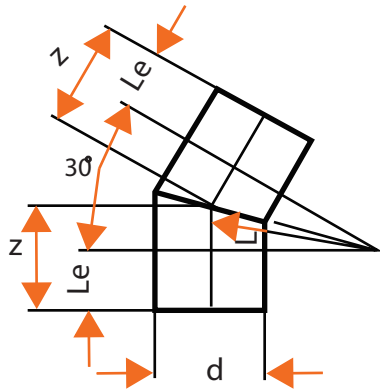
Mola sadra st., Abooreyhan st Eshtehard Industrial Town, TEHRAN/ IRAN

Tel: +98 21 88 20 20 60 (50 line)

Fax: +98 21 88 20 20 81

WEB SITE ADDRESS: WWW.PARSETHYLENE-KISH.COM

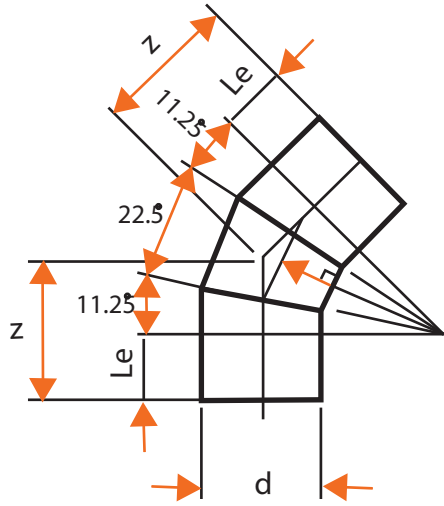




Elbow 30°

d		Le	r 1)	z
mm	equiv inch			
110	4	200	165	244
125	5		188	250
140	5 1/2		210	256
160	6		240	264
180	7		270	272
200	8		300	280
225	9		338	291
250	10	300	375	400
280	11		420	412
315	12	350	473	478
355	14		533	493
400	16		600	511
450	18		675	531
500	20	400	750	601
560	22		840	625
630	25		945	653
710	28		1065	686
800	32	450	1200	722
900	36		1350	812
1000	40		1500	852

1) $r = 1,5 d$

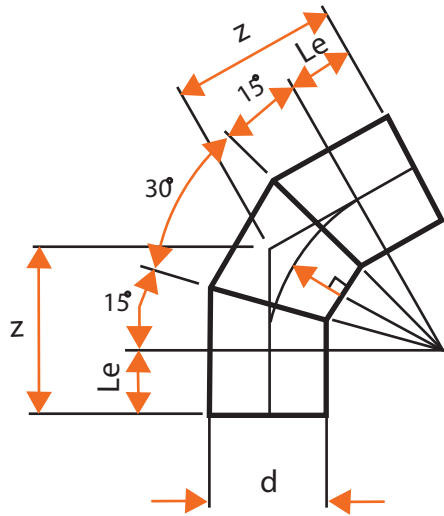


Elbow 45°

d		Le	r 1)	z
mm	equiv inch			
110	4	200	165	268
125	5		188	278
140	5 1/2		210	287
160	6		240	299
180	7		270	312
200	8		300	324
225	9		338	340
250	10	300	375	462
280	11		420	474
315	12	350	473	548
355	14		533	570
400	16		600	598
450	18		675	630
500	20	400	750	715
560	22		840	748
630	25		945	791
710	28		1065	842
800	32		1200	897
900	36	450	1350	1010
1000	40		1500	1072

1) $r = 1,5 d$



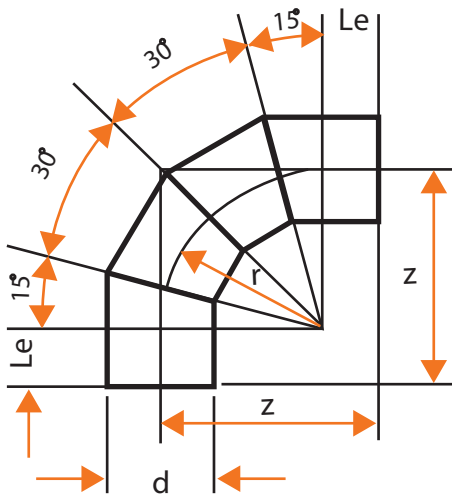


Elbow 60°

d		Le	r 1)	z	
mm	equiv inch				
110	4	200	165	295	
125	5		188	308	
140	5 1/2		210	321	
160	6		240	338	
180	7		270	355	
200	8		300	373	
225	9		338	395	
250	10		300	375	516
280	11			420	542
315	12	350	473	626	
355	14		533	658	
400	16		600	696	
450	18		675	739	
500	20	400	750	833	
560	22		840	885	
630	25		945	946	
710	28		1065	1015	
800	32		1200	1093	
900	36	450	1350	1229	
1000	40		1500	1316	

1) $r = 1,5 d$





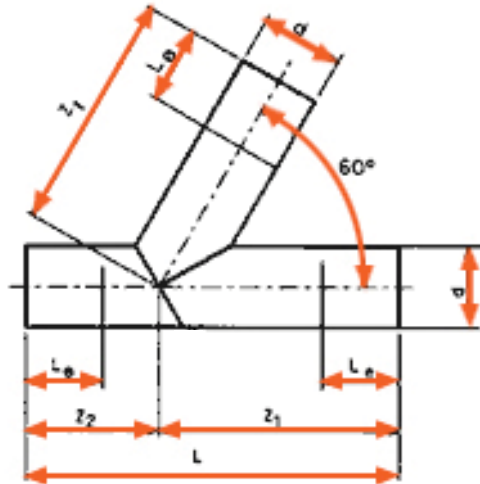
Elbow 90°

d		Le	r 1)	z
mm	equiv inch			
110	4	200	165	365
125	5		188	388
140	5 1/2		210	410
160	6		240	440
180	7		270	470
200	8		300	500
225	9		338	538
250	10		300	375
280	11	420		720
315	12	350	473	823
355	14		533	883
400	16		600	950
450	18		675	1025
500	20	400	750	1150
560	22		840	1240
630	25		945	1345
710	28		1065	1465
800	32		1200	1600
900	36	450	1350	1800
1000	40		1500	1950

1) $r = 1,5 d$



Tee60

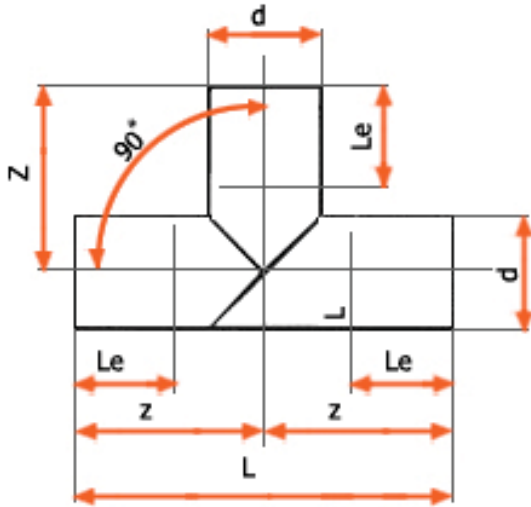


d		Le	L	Z1	Z2
mm	equiv inch				
110	4	200	600	375	225
125	5		645	405	240
140	5 1/2		681	425	256
160	6		742	462	280
180	7		800	500	300
200	8		859	537	322
225	9		930	580	350
250	10		300	1005	630
280	11	1095		680	415
315	12	350	1190	740	450
355	14		1255	780	475
400	16		1350	850	500
450	18		1425	900	525
500	20	400	1500	950	550
560	22		1580	1000	580
630	25		1645	1050	595
710	28		1770	1140	630
800	32		1910	1230	680
900	36	450	2090	1370	720
1000	40		2170	1410	760
1200	48		2500	1590	910
1)1400	56		2750	1720	1030
1)1600	64		3000	1880	1120

1) These values are not covered by the **DIN 16963** norm Part 2



Tee90

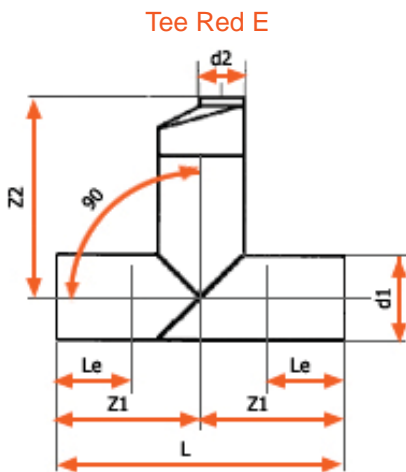
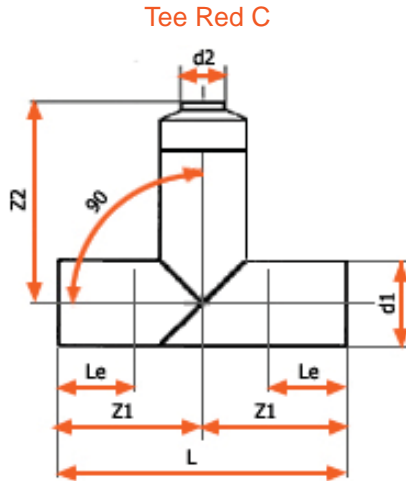


mm	equiv inch	Le	L	z
110	4	200	510	255
125	5		530	265
140	5 1/2		540	270
160	6		560	280
180	7		580	290
200	8		600	300
225	9		630	315
250	10	300	850	425
280	11		880	440
315	12	350	1020	510
355	14		1060	530
400	16		1100	550
450	18		1150	575
500	20	400	1300	650
560	22		1360	680
630	25		1430	715
710	28		1510	755
800	32		1600	800
900	36		450	1800
1000	40	1900		950
1200	48	2100		1050
1)1400	56	2300		1150
1)1600	64	2500		1250

1) These values are not covered by the **DIN 16963** norm Part 2



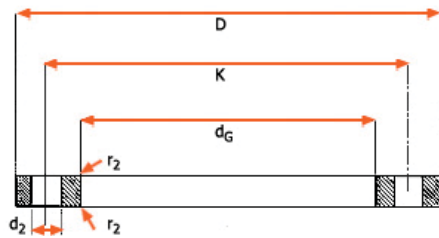
Reducing 90° Tee



d1		d2		Le	L	Z1	Z2	
mm	equiv inch							
110	4	63 a	90	200	510	255	453	
125	5	63 a	110		530	265	463	
140	5 1/2	75 a	125		540	270	468	
160	6	90 a	140		560	280	478	
180	7	90 a	160		580	290	486	
200	8	110 a	180		600	300	496	
225	9	125 a	200		630	315	511	
250	10	125 a	225		300	850	425	721
280	11	140 a	250	880		440	736	
315	12	160 a	280	350	1020	510	904	
355	14	180 a	315		1060	530	924	
400	16	200 a	355		1100	550	944	
450	18	225 a	400		1150	575	969	
500	20	250 a	450		400	1300	650	1142
560	22	280 a	500	1360		680	1172	
630	25	315 a	560	1430		715	1207	
710	28	355 a	630	1510		755	1247	
800	32	400 a	710	1600		800	1292	
900	36	450 a	800	450		1800	900	1490
1000	40	500 a	900			1900	950	1540
1200	48	630 a	1000			2100	1050	1640
1400	56	710 a	1200		2300	1150	1740	
1600	64	800 a	1400		2500	1250	1840	



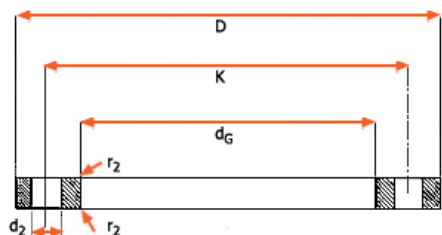
Nominal pressure 1 & 2.5



Nominal width	Nominal pressure 1 and 2.5 Bolts					
	D	dg	k	Quantity	Thread	d2
6	Mating dimensions , See under nominal pressure 6					
8						
10						
15						
20						
25						
32						
40						
50						
65						
80						
100						
125						
150						
(175)						
200						
250						
300						
350						
400						
(450)						
500						
600						
700						
800						
900	1375	1280	1320	302	M27	30
1000						
1200						
1400	1575	1480	1520	36	M27	30
1600	1790	1690	1730	40	M27	30
1800	1990	1890	1930	44	M27	30
2000	2190	2090	2130	48	M27	30
2200	2405	2295	2340	52	M30	33
2400	2605	2495	2540	56	M30	33
2600	2805	2695	2740	60	M30	33
2800	3030	2910	2960	64	M33	36
3000	3230	3110	3160	68	M33	36
3200	3430	3310	3360	72	M33	36
3400	3630	3510	3560	76	M33	36
3600	3840	3720	3770	80	M33	36
3800	4045	3920	3970	80	M36	39
4000	4245	4120	4170	84	M36	39
DN= Nominal size of metal ring			D= Outside diameter of metal ring			
D1= Outside diameter of PE pipe			d6= Inside diameter of metal ring			



Nominal pressure 6



Nominal width	Nominal pressure 6 Bolts					
	D	d4	k	Quantity	Thread	d2
6	65	25	40	4	M10	11
8	70	30	45	4	M10	11
10	75	35	50	4	M10	11
15	80	40	55	4	M10	11
20	90	50	65	4	M10	11
25	100	60	75	4	M10	11
32	120	70	90	4	M12	14
40	130	80	100	4	M12	14
50	140	90	110	4	M12	14
65	160	110	130	4	M12	14
80	190	128	150	4	M16	18
100	210	148	170	4	M16	18
125	240	178	200	8	M16	18
150	265	202	225	8	M16	18
(175)	---	---	---	---	---	---
200	320	258	280	8	M16	18
250	375	312	335	12	M16	18
300	440	365	395	12	M20	22
350	490	415	445	12	M20	22
400	540	465	495	16	M20	22
(450)	595	520	550	16	M20	22
500	645	570	600	20	M20	22
600	755	670	705	20	M24	26
700	860	775	810	24	M24	26
800	975	880	920	24	M27	30
900	1075	980	1020	24	M27	30
1000	1175	1080	1120	29	M27	30
1200	1405	1295	1340	32	M30	33
1400	1630	1510	1560	36	M33	36
1600	1830	1710	1760	40	M33	36
1800	2045	1920	1970	44	M36	39
2000	2265	2125	2180	48	M39	42
2200	2475	2335	2390	52	M39	42
2400	2685	2545	2600	56	M39	42
2600	2905	2750	2810	60	M45	48
2800	3115	2960	3020	64	M45	48
3000	3315	3160	3220	68	M45	48
3200	3525	3370	3430	72	M45	48
3400	3735	3580	3640	76	M45	48
3600	3970	3790	3860	80	M52	56

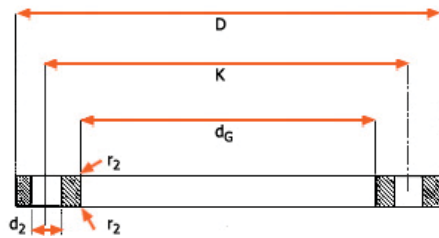
No flanges standardized

DN= Nominal size of metal ring	D = Outside diameter of metal ring
D1= Outside diameter of PE pipe	d6= Inside diameter of metal ring





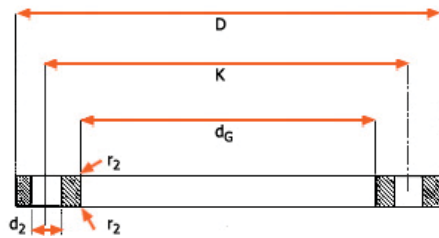
Nominal pressure 10



Nominal width	Nominal pressure 10 Bolts					
	D	dG	k	Quantity	Thread	d2
Mating dimensions , See under nominal pressure 40						
Mating dimensions, ooo under n.p.16						
Mating dimensions, ooo under n.p.40						
Mating dimensions, See under nominal pressure 16						
125	340	268	295	8	M20	22
150	395	320	350	12	M20	22
(175)	445	370	400	12	M20	22
200	505	430	460	16	M20	22
250	565	482	515	16	M24	26
300	615	532	565	20	M24	26
	670	585	620	20	M24	26
350	780	685	725	20	M27	30
400	895	800	840	24	M27	30
(450)	1015	905	950	24	M30	33
500						
600	1115	1005	1050	28	M30	33
700	1230	1110	1160	28	M33	36
800	1455	1330	1380	32	M36	39
900	1675	1535	1590	36	M39	42
1000	1915	1760	1820	40	M45	48
1200	2115	1960	2020	44	M45	48
1400	2325	2170	2230	48	M45	48
1600	2550	2370	2440	52	M52	56
1800	2760	2570	2650	56	M52	56
2000	2960	2780	2850	40	M52	56
2200	3180	3000	3070	64	M52	56
2400	3405	3210	3290	58	M56	62
No flanges standardized						
DN= Nominal size of metal ring				D= Outside diameter of metal ring		
D1= Outside diameter of PE pipe				d6= Inside diameter of metal ring		



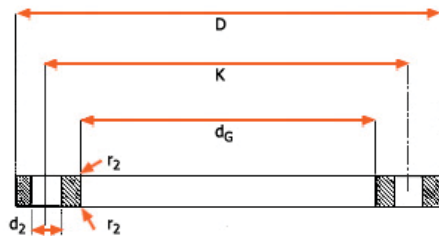
Nominal pressure 16



Nominal width	Nominal pressure 16 Bolts					
	D	d _G	k	Quantity	Thread	d ₂
Mating dimensions , See under nominal pressure 40						
15 20 25	185	122	145	4	M 16	18
Mating dimensions , See under nominal n.p.40						
65 80 100	220	158	180	8	M16	18
125 150 (175)	250 285 315	188 212 242	210 240 270	8 8 8	M16 M20 M20	18 22 22
200 250 300	340 405 460	268 320 378	295 355 410	12 12 12	M20 M24 M24	22 26 26
350 400 (450) 500	520 580 640 715	438 490 550 610	470 525 585 650	16 16 20 20	M24 M27 M27 M30	26 30 30 33
600 700 800	840 910 1025	725 795 900	770 840 950	20 24 24	M33 M33 M36	36 36 39
900 1000 1200	1125 1255 1485	1000 1115 1330	1050 1170 1390	28 28 32	M36 M39 M45	39 42 48
1400 1600 1800	1685 1930 2130	1530 1750 1950	1590 1820 2020	36 40 44	M45 M52 M52	48 56 56
2000 2200 2400	2345 2355	2150 2360	2230 2440	48 52	M56 M56	62 62
No flanges standardized						
DN= Nominal size of metal ring				D= Outside diameter of metal ring		
D1= Outside diameter of PE pipe				d6= Inside diameter of metal ring		



Nominal pressure 25

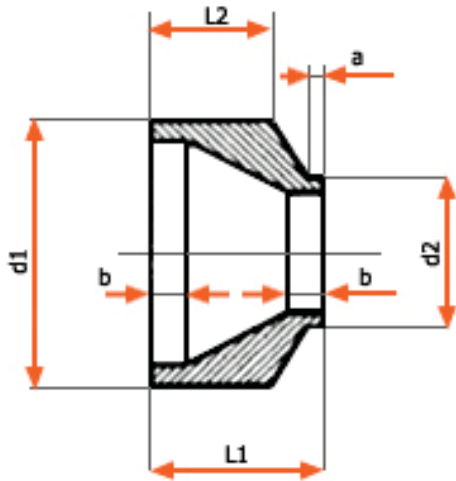


Nominal width	Nominal pressure 25 Bolts					
	D	dg	k	Quantity	Thread	d2
Mating dimensions , See under nominal pressure 40						
125 150 (175)	330	248	280	12	M24	26
200 250 300	360 425 485	278 335 395	310 370 430	12 12 16	M24 M27 M27	26 30 30
350 400 (450) 500	555 620 --- 730	450 505 --- 615	490 550 --- 660	16 16 --- 20	M30 M33 --- M33	33 36 --- 36
600 700 800	845 960 1085	720 820 930	770 875 990	20 24 24	M36 M39 M45	39 42 48
900 1000 1200	1185 1320 1530	1030 1140 1350	1090 1210 1420	28 28 32	M45 M52 M52	48 56 56
1400 1600 1800	1755 1975 2195	1560 1780 1985	1640 1860 2070	36 40 44	M56 M56 M64	62 62 70
2000 2200 2400	2425	2210	2300	48	M64	70
No flanges standardized						
DN= Nominal size of metal ring				D= Outside diameter of metal ring		
D1= Outside diameter of PE pipe				d6= Inside diameter of metal ring		

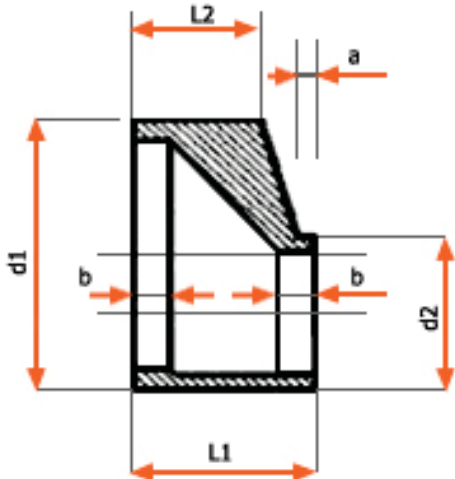


Concentric/Excentric Reducing

Concentric Reducing

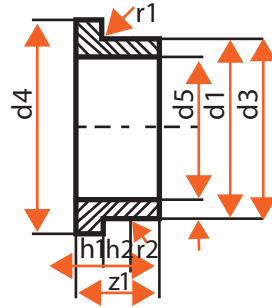


Excentric Reducing



d1		d2	L1	L2	a	b
mm	equiv inch					
110	4	63 a 90	200	150	20	30
125	5	63 a 110				
140	5 1/2	75 a 125				
160	6	90 a 140				
180	7	90 a 160				
200	8	110 a 180				
225	9	125 a 200				
250	10	125 a 225	300	250	25	40
280	11	140 a 250				
315	12	160 a 280	400	300	30	50
355	14	180 a 315				
400	16	200 a 355				
450	18	225 a 400				
500	20	250 a 450				
560	22	280 a 500	500	350	40	70
630	25	315 a 560				
710	28	355 a 630				
800	32	400 a 710				
900	36	450 a 800				
1000	40	500 a 900	600	400	50	100
1200	48	630 a 1000				
1400	56	710 a 1200				
1600	64	800 a 1400				



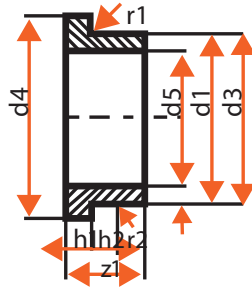


Short Stub End for PFCP Gasket (PE 100)

Ext diam pipe d1	d3	d4	2) d5 PE 100					3) h1		h2	r1	r2 min.	4) z1
			PN6	PN10	PN 12.5	PN16	PN20	PN6 PN10	PN12.5 PN16 PN20				
20	27	45	-	-	-	-	-	-	-	-	-	-	-
25	33	58	-	-	-	-	-	-	-	-	-	-	-
32	40	1) 64	-	-	26.9	25.7	24.4	-	10	13	3	20	100
40	50	78	-	34.9	33.7	32.2	30.5	11	18	15	3	-	-
50	61	88	-	43.8	42.3	40.4	38.2	12	19	15	3	20	100
63	75	102	-	55.1	53.1	50.8	48.0	14	21	20	4	-	-
75	83	122	-	65.7	63.3	60.7	57.3	16	23	20	-	-	100
90	105	1) 132	-	78.8	76.0	72.8	68.7	17	24	20	4	20	130
110	125	158	-	96.3	93.0	89.0	84.0	18	26	25	-	-	130
125	132	158	-	109.6	105.8	101.0	95.5	-	33	20	-	-	-
140	155	188	-	122.8	118.5	113.3	106.9	25	33	28	4	20	130
160	175	212	-	140.3	135.4	129.4	121.5	-	45	28	-	-	-
180	1) 188	212	-	157.8	152.3	144.9	136.7	30	50	30	-	-	130
200	232	268	-	175.3	169.2	160.9	151.7	32	52	40	4	20	150
225	235	268	-	197.2	189.6	181.1	170.7	32	52	30	-	-	150
250	285	320	-	219.3	210.8	201.3	189.9	-	40	40	-	-	-
280	291	320	-	244.8	236.0	225.5	212.5	35	65	30	4	20	150
315	335	370	291.9	275.4	265.5	253.6	239.1	40	65	40	-	-	-
355	373	430	328.8	310.2	299.2	258.8	269.3	46	65	45	6	20	170
400	427	482	370.6	349.7	337.2	322.0	303.5	60	70	60	-	-	-
450	1) 482	1) 545	416.3	393.4	379.3	362.2	341.5	-	50	50	-	-	-
500	530	585	462.5	437.0	421.4	402.5	379.6	60	70	60	6	20	170
560	615	1) 656	517.9	489.5	471.9	450.8	-	-	40	40	-	-	-
630	642	685	582.8	550.7	531.3	507.1	-	50	70	50	-	-	170
710	737	800	656.7	620.6	598.4	-	-	52	70	50	-	-	170
800	840	905	739.9	699.4	674.3	-	-	55	-	50	8	20	170
900	944	1005	832.4	786.9	-	-	-	60	-	70	-	-	190
1000	1047	1110	924.9	874.1	-	-	-	60	-	70	-	-	190
1200	1245	1330	1109.6	-	-	-	-	-	-	-	-	-	-

1) DIN 16963 norm part 4.
 2) D5 consider average values, ISO 11922-1 norm.
 3) The H1 values correspond to those of higher PN.
 4) Z1 corresponds to Z1 min. Plus 50mm.





Short Stub End for PFCP Gasket

Ext diam pipe d1	d3	d4	2) d5 PE 63						3) h1			h2	r1	r2 min.	4) Z1
			PN 3,2	PN 4	PN 6	PN 10	PN 12,5	PN 16	PN 3,2 PN 4	PN 6 PN 10	PN 12,5 PN 16				
20	27	45	-	-	-	15,1	15,1	14,1	-	7	7				
25	33	58	-	-	20,1	20,1	19,1	17,6	-	9	9	13	3	20	100
32	40	1) 64	-	-	27,1	25,9	24,4	22,7	-	10	10				
40	50	78	-	35,1	35,1	32,2	30,5	28,3	11	11	18	15	3		
50	61	88	-	45,2	44,0	40,4	38,2	35,4	12	12	19	15	3	20	100
63	75	102	58,2	57,8	55,5	50,8	48,0	44,8	14	14	21	20	4		
75	89	122	70,3	69,1	66,1	60,7	57,3	53,2	16	16	23	20			100
90	105	1) 132	84,4	82,9	79,5	72,8	68,7	64,0	17	17	24	20	4	20	130
110	125	158	103,1	101,4	96,9	89,0	84,0	78,0	18	18	26	25			130
125	132	158	117,2	115,2	110,3	101,0	95,5	88,0			33	20			
140	155	188	131,4	129,0	123,5	113,3	106,9	98,5	18	25	33	28	4	20	130
160	175	212	150,2	147,4	141,2	129,4	121,5	112,7			45	28			
180	1) 188	212	169,0	166,0	158,9	144,9	136,7	126,8		30	50	30			130
200	232	268	187,5	184,3	176,3	160,9	151,7	140,7	18	32	52	40	4	20	150
225	235	268	211,2	207,6	198,5	181,1	170,7	158,4		32	52	30			150
250	285	320	234,6	230,5	220,6	201,3	189,9	176,0				40			
280	291	320	262,8	258,2	247,1	225,5	212,5	197,1	20	35	65	30	4	20	150
315	335	370	295,6	290,4	277,2	253,6	239,1	221,7				40			
355	373	430	333,1	327,3	312,4	285,8	269,3	250,0	23	40	65	40			
400	427	482	375,3	368,9	351,9	322,0	303,5	281,5	26	46	65	45	6	20	170
450	1) 482	1) 545	422,4	414,3	396,1	362,2	341,5	316,9	38	60	70	60			
500	530	585	469,4	460,3	440,1	402,5	379,6	-	38		70	50			
560	615	1) 656	524,7	515,5	492,8	450,8	-	-	40	60	-	60	6	20	170
630	642	685	590,5	579,9	554,4	507,1	-	-	40		-	40			
710	737	800	665,3	653,4	624,8	-	-	-	40	50	-	50			170
800	840	905	749,8	736,3	704,0	-	-	-	42	52	-	50	8	20	170
900	944	1005	843,4	828,5	792,0	-	-	-	46	55	-	50			170
1000	1047	1110	937,2	920,5	880,0	-	-	-	50	60	-	70			190
1200	1245	1330	1124,3	1104,1	-	-	-	-	60	-	-	70			190

1) DIN 16963 norm part 4.

3) The H1 values correspond to those of higher PN.

2) D5 considers average values, ISO 11922-1 norm.

4) Z1 corresponds to Z1 min. Plus 50mm.



www.parsethylene-kish.com

Office Address ■ No18, Mina Blvd., Africa St. Tehran/Iran
 Factory address: ■ Mola sadra st., Abooreyhan st Eshtehard Industrial Town, TEHRAN/ IRAN

Tel: +98 21 88 20 20 60 (50 line)
 Fax: +98 21 88 20 20 81



- D:** DIAMETER OF CAP
- L:** LENGTH
- E:** THICKNESS

EndCap

Product Detail	SIZE: SDR17			Product Detail	SIZE: SDR11		
	PE 100 - PN 10				PE 100 - PN 16		
	Spec.DN				Spec.DN		
	D	L	E		D	L	E
	63	67	3.8		63	67	5.8
	75	71	4.5		75	71	6.8
	90	80	5.4		90	80	8.2
	110	91	6.6		110	91	10.0
	160	110	9.5		160	110	14.6
	200	117	11.9		200	117	18.2
	250	140	14.8		250	140	22.7
	315	162	18.7		315	162	28.6



Polyethylene Fitting Catalogue



Office Address ■ No18, Mina Blvd., Africa St. Tehran/Iran
Factory address: ■ Mola sadra st., Abooreyhan st Eshtehard Industrial Town, TEHRAN/ IRAN

Tel: +98 21 88 20 20 60 (50 line)
Fax: +98 21 88 20 20 81

WEB SITE ADDRESS: WWW.PARSETHYLENE-KISH.COM

